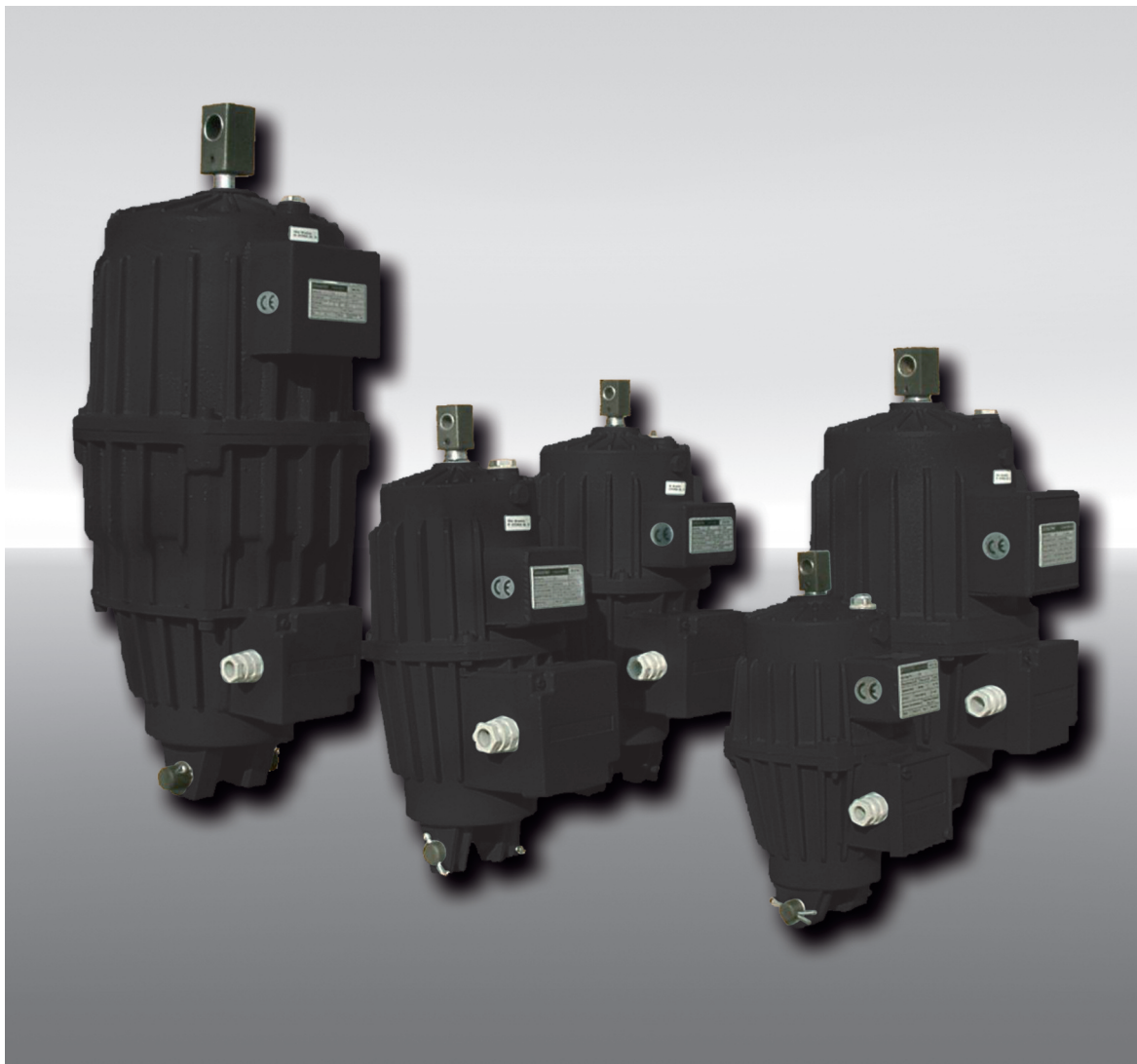


Thrustors for electrohydraulic brakes

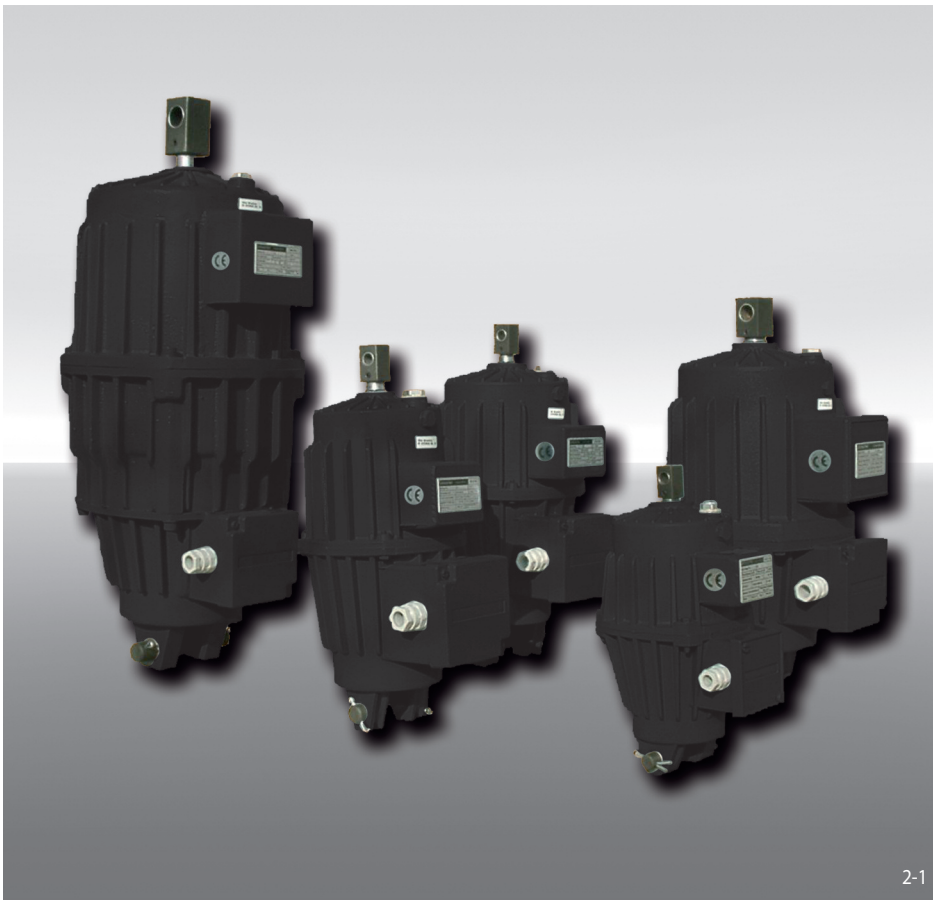


Issue 09/2022 · Technical details subject to change without notice.

E09.062e

Thrustors 451 to 464

electrohydraulic



Features	Code
Thrustor	T
Design	H
Spring activated, built-in spring or non- activated, external spring needed	F U
Electrohydraulically released	E
No adjustment to accommodate friction block wear	K
Thrustors 451, 452, 453, 454, 455, 456, 457, 458, 459 or 464 are available	451 to 464
Options (see page 4)	...

Example for ordering

Thrustor TH, spring activated, electrohydraulically released, no adjustment to accommodate friction block wear, thrustor type 453, with manually hand release, for horizontal use:

TH - FEK - 453 - LS - hor

Design and function

The electrohydraulic thrustor combines all the basic elements of a hydraulic system in a coaxial unit: an electric motor, a hydraulic pump and a cylinder with a piston. It is designed to exert a constant linear force for a given stroke. The centrifugal pump impeller, coupled to the motor shaft, builds up hydraulic pressure under the piston which causes an upward movement against the external attenuation spring or against the built-in attenuation spring. When the engine is switched off, the piston moves back via the external attenuation spring or via the built-in attenuation spring. The hydraulic force is almost independent of the piston position of the cylinder. With a lower load, the stroke movement is faster and the downward movement slower.

Advantages

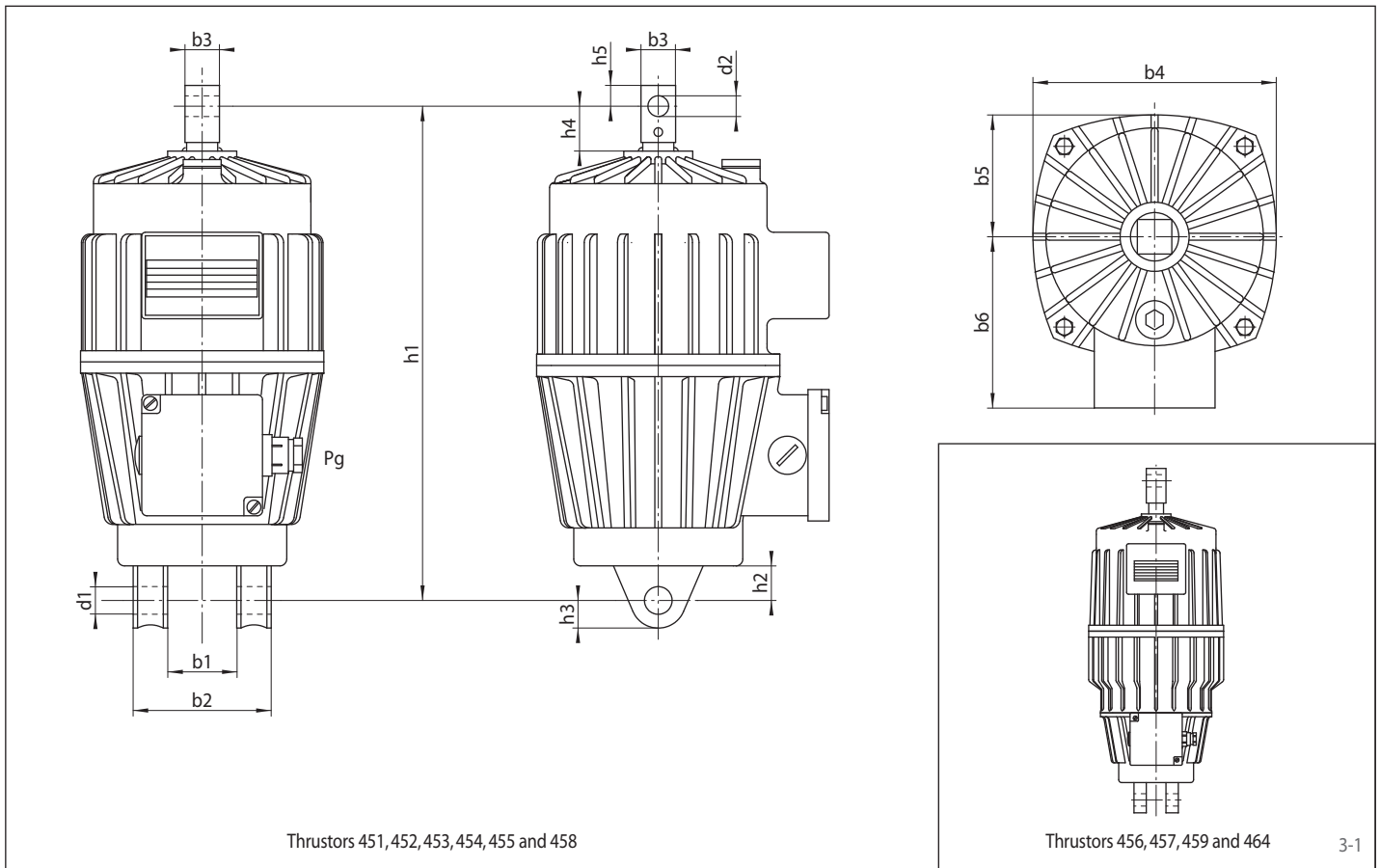
- The hydraulic force of the thrustor is independent of the position of the piston rod.
- The thrustor cannot be overloaded, even if an external force acts on the piston rod that is greater than the thrust of the thrustor.

General technical data

Motor	2-pole Three-phase squirrel cage
Insulation level	F
Voltage	230 / 380 VAC
Supply frequency	50 Hz
Duty factor	100%
Max. number of actuation	2000/h
Insulation	IP56
Oil filling	IP Hydrus Oil 10
Mounting position	vertical with piston rod upwards
Permissible ambient temperature	-20 °C up to +45 °C

Thrustors 451 to 464

electrohydraulic



Dimensions

Thrustor type	b1	b2	b3	b4	b5	b6	d1	d2	h1	h2	h3	h4	h5	k*	m*	n*	Pg
	mm	mm	mm	mm	mm	mm	mm	mm	mm	mm	mm	mm	mm	mm	mm	mm	
451	40	80	20	142	71	103	16	12	286	20	16	26	13	64	62	32	11
452	40	90	25	168	84	128	16	16	380	25	20	37	16	70	84	65	16
453	60	110	30	192	96	136	20	20	406	30	25	39	18	70	84	65	16
454	60	110	30	192	96	136	20	20	406	30	25	39	18	70	84	65	16
455	60	120	35	234	117	155	20	20	450	30	25	37	20	94	110	60	16
456	40	90	40	274	137	166	25	25	645	35	25	67	25	94	110	60	16
457	40	90	40	274	137	166	25	25	645	35	25	67	25	94	110	60	16
458	60	120	35	234	117	155	20	20	515	30	25	42	20	-	-	-	16
459	40	90	40	274	137	166	25	25	705	35	25	67	25	-	-	-	16
464	40	90	40	274	137	166	25	25	705	35	25	67	25	-	-	-	16

* applies to the option of the external attenuation spring (R) see drawing on page 4

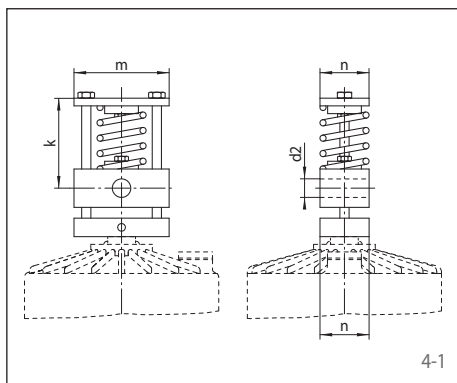
Technical Data

Thrustor type	Lifting force	Stroke	Nominal power	Max. current consumption at 380 V, 50 Hz	Oil Volume	Weight with Oil
	N	mm	W	A	l	kg
451	220	50	130	0,3	1,4	8
452	300	50	180	0,4	2,5	13
453	600	50	240	0,5	3,5	15
454	750	50	280	0,6	3,5	15
455	1200	60	370	0,8	4,5	21
456	2000	60	590	1,2	11,0	47
457	3000	60	680	1,4	11,0	47
458	1200	120	370	0,8	6,0	27
459	2000	120	590	1,2	13,0	52
464	3000	120	680	1,4	13,0	52

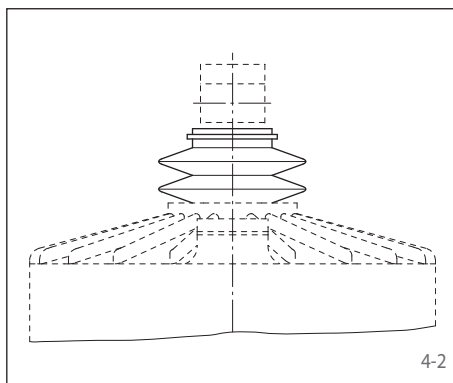
Code and description of possible options

Options	Code
<ul style="list-style-type: none"> • For temperatures down to -30 °C Filling with a special oil 	(A)
<ul style="list-style-type: none"> • For temperatures down to -40 °C With an electric heating rod for 230 VAC 	(AA)
<ul style="list-style-type: none"> • For temperatures up to +70 °C With special seals 	(W)
<ul style="list-style-type: none"> • For temperatures briefly up to +100 °C With special seals, pressure relief valve, special paint and special oil 	(HR)
<ul style="list-style-type: none"> • Lowering valve Slows down the lowering of the piston rod 	(SV)
<ul style="list-style-type: none"> • Non-standard voltage & frequency For use with non-standard voltages or frequencies 	(Vf)
<ul style="list-style-type: none"> • External attenuation spring Additional spring on the piston rod for better adjustability 	(R)
<ul style="list-style-type: none"> • Rubber hood To protect the piston rod 	(Cap)
<ul style="list-style-type: none"> • Design in insulation IP65 Additional seal on the terminal box 	(IP65)
<ul style="list-style-type: none"> • With hand release lever To manually drive out the piston rod in a de-energised state (brake release) 	(LS)
<ul style="list-style-type: none"> • Horizontal application For horizontal operation, an additional component is required internally 	(hor)
<ul style="list-style-type: none"> • Terminal box turned 90° 	(T)
<ul style="list-style-type: none"> • Other colour than RAL 9005 	(Col)
<ul style="list-style-type: none"> • Version with increased corrosion protection 	(M)

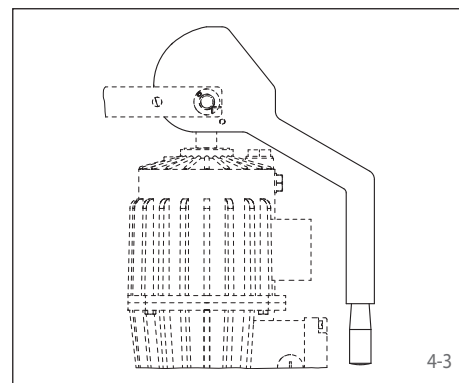
External attenuation spring (R)



Rubber hood (Cap)



With hand release lever (LS)



Please note:

The options can not be combined arbitrarily. If you need more options please contact RINGSPANN.

Motor connection

- The three ends of the supply cable can be connected to the terminals in any order, since the fan operates independently of the direction of rotation of the motor.
- The thruster should be switched via a separate contactor. The direct parallel connection with e.g. the crane motor can delay the lowering time and thus the braking effect.
- The thrusters are insensitive to voltage fluctuations of up to $\pm 10\%$.
- Mounting points for an earthing cable are provided inside and outside the terminal box.
- The terminal box has a PG gland on each side for cable feedthrough.

Hydraulic oil

The thruster is delivered complete with oil filling IP Hydrus Oil 10.

Oils from other manufacturers with a viscosity of approx. $10 \text{ mm}^2/\text{s}$ at $+40^\circ\text{C}$ can also be used.

Examples:

- ESSO Spinesso 10
- Shell Tellus Oil 10
- CHEVRON Spindel Oil 10
- Aral Vitam GF 10
- etc.

Operating and ambient temperature

All thrusters are designed for continuous operation and for interval operation with up to 2000 operations/hour at ambient temperatures ranging from -20°C to $+45^\circ\text{C}$. At temperatures of

more than $+45^\circ\text{C}$ the oil becomes thinner; the hydraulic losses increase and the hydraulic forces decrease. At temperatures below -20°C the oil becomes denser and the piston movements be-

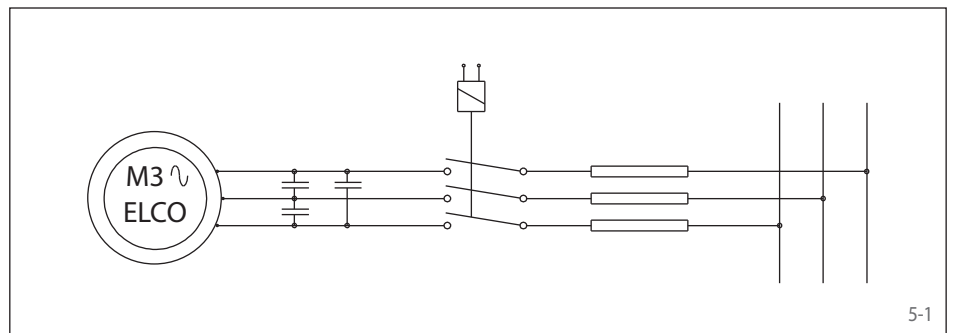
come slower. For these reasons, the thrusters must be filled with a suitable type of oil for extreme ambient temperatures.

Capacitor for fast downward movement

The lowering time of the piston rod can be reduced by using three capacitors connected in parallel. Typical applications are brakes for winches with a lifting speed of more than $8 \text{ m}/\text{min}$.

Recommended capacity values:

451 / 452	$3 \times 10 \mu\text{F}$
453 / 454 / 455 / 458	$3 \times 20 \mu\text{F}$
456 / 457 / 459 / 464	$3 \times 50 \mu\text{F}$



Germany

RINGSPANN GmbH

Schaberweg 30 - 38, 61348 Bad Homburg, Germany
+49 6172 2750
info@ringspann.de • www.ringspann.de

RINGSPANN RCS GmbH

Hans-Mess-Straße 7, 61440 Oberursel, Germany
+49 6172 67 68 50
info@ringspann-rcs.de • www.ringspann-rcs.de

France

SIAM - RINGSPANN S.A.

23 rue Saint-Simon, 69009 Lyon, France
+33 4 78 83 59 01
info@siam-ringspann.fr • www.ringspann.fr

Great Britain, Ireland

RINGSPANN (U.K.) LTD.

3, Napier Road, Bedford MK41 0QS, Great Britain
+44 1234 342511
info@ringspann.co.uk • www.ringspann.co.uk

Italy

RINGSPANN Italia S.r.l.

Via A.D. Sacharov, 13, 20812 Limbiate (MB), Italy
+39 02 93 57 12 97
info@ringspann.it • www.ringspann.it

Netherlands, Belgium, Luxembourg

RINGSPANN Benelux B.V.

Nieuwenkampsmeden 6-15, 7472 DE Goor,
Netherlands • +31 547 26 13 55
info@ringspann.nl • www.ringspann.nl

Austria, Hungary, Slovenia

RINGSPANN Austria GmbH

Triesterstraße 21, 2620 Neunkirchen, Austria
+43 2635 62446
info@ringspann.at • www.ringspann.at

Poland

Radius-Radpol Wiecheć Sp.J.
Ul. Pasjonatów 3, 62-070 Dąbrowa, Poland
+48 61 814 39 28 • info@radius-radpol.com.pl
www.radius-radpol.com.pl

Romania, Bulgaria, Moldova

S.C. Industrial Seals and Rolls S.R.L.
Str. Depozitelor, No. 29, 110078 Pitesti, Romania
+4 0751 228228
mihai@isar.com.ro • www.isar.com.ro

Sweden, Finland, Denmark,
Norway, Baltic states**RINGSPANN Nordic AB**

Flottiljgatan 69, 721 31 Västerås, Sweden
+46 156 190 98
info@ringspann.se • www.ringspann.se

Switzerland

RINGSPANN AG

Sumpfstrasse 7, P.O. Box, 6303 Zug,
Switzerland • +41 41 748 0900
info@ringspann.ch • www.ringspann.ch

Spain, Portugal

RINGSPANN IBERICA S.A.

C/Uzbina, 24-Nave E1, 01015 Vitoria, Spain
+34 945 2277-50
info@ringspann.es • www.ringspann.es

Czech Republic, Slovakia

Ing. Petr Schejbal
Mezivřší 1444/27, 14700 Prag, Czech Republic
+420 222 96 90 22
Petr.Schejbal@ringspann.cz • www.ringspann.com

Ukraine

"START-UP" LLC.
Saltivske Hwy, 43, letter G-3, office 101,
Kharkiv 61038, Ukraine • +38 057 717 03 04
start-up@start-up.kh.ua • www.start-up.kh.ua

Asia

Australia, New Zealand

RINGSPANN Australia Pty Ltd

Unit 5, 13A Elite Way, Carrum Downs Vic 3201,
Australia • +61 3 9069 0566
info@ringspann.com.au • www.ringspann.com.au

China, Taiwan

RINGSPANN Power Transmission (Tianjin) Co., Ltd.

No. 21 Gaoyan Rd., Binhai Science and Technology
Park, Binhai Hi-Tech Industrial, Development Area,
Tianjin, 300458, P.R. China • +86 22 5980 31 60
info.cn@ringspann.cn • www.ringspann.cn

India, Bangladesh, Nepal

RINGSPANN Power Transmission India Pvt. Ltd.

GAT No: 679/2/1, Village Kuruli, Taluka Khed, Chakan-
Alandi Road, Pune - 410501, Maharashtra, India
+91 21 35 67 75 00 • info@ringspann-india.com
www.ringspann-india.com

Singapore, ASEAN

RINGSPANN Singapore Pte. Ltd.

143 Cecil Street, #17-03 GB Building,
Singapore 069542 • +65 9633 6692
info@ringspann.sg • www.ringspann.sg

South Korea

RINGSPANN Korea Ltd.

33 Gojae-17 Ghil Dongnam-gu, 31187 Cheonan-si
Chungnam, South Korea • +82 10 54961 368
info@ringspann.kr • www.ringspann.kr

America

Brazil

Antares Acoplamentos Ltda.
Rua Evaristo de Antoni, 1222, Caxias do Sul, RS,
CEP 95041-000, Brazil • +55 54 32 18 68 00
vendas@antaresacoplamentos.com.br
www.antaresacoplamentos.com.br

Chile, Peru, Colombia, Ecuador

RINGSPANN Sudamérica SpA

Miraflores 222, Piso 28-N, Santiago,
Región Metropolitana, Chile • +56 9 8414 4078
info@ringspannsudamerica.com
www.ringspannsudamerica.com

USA, Canada, Mexico

RINGSPANN Corporation

10550 Anderson Place, Franklin Park, IL 60131, USA
+1 847 678 35 81
info@ringspanncorp.com •
www.ringspanncorp.com

Africa and Middle East

Egypt

Shofree Trading Co.
218 Emtedad Ramsis 2, 2775 Nasr City, Cairo, Egypt
+20 2 20 81 20 57
info@shofree.com • www.ringspann.com

Israel

G.G. Yarom Rolling and Conveying Ltd.
6, Hamaktesh Str., 58810 Holon, Israel
+972 3 557 01 15
noam_a@gg.co.il • www.ringspann.com

South Africa, Sub-Saharan

RINGSPANN South Africa (Pty) Ltd.

96 Plane Road Spartan, Kempton Park,
P.O. Box 8111 Edenglen 1613, South Africa
+27 11 394 18 30
info@ringspann.co.za • www.ringspann.co.za

Iran

Persia Robot Machine Co. Ltd.
4th Floor, No 71, Mansour St, Motahari Avenue,
Tehran 15957, Iran • +98 21 887091 58-62
info@persiarobot.com • www.ringspann.com

Maghreb, West Africa

SIAM - RINGSPANN S.A.

23 rue Saint-Simon, 69009 Lyon, France
+33 4 78 83 59 01
info@siam-ringspann.fr • www.ringspann.fr